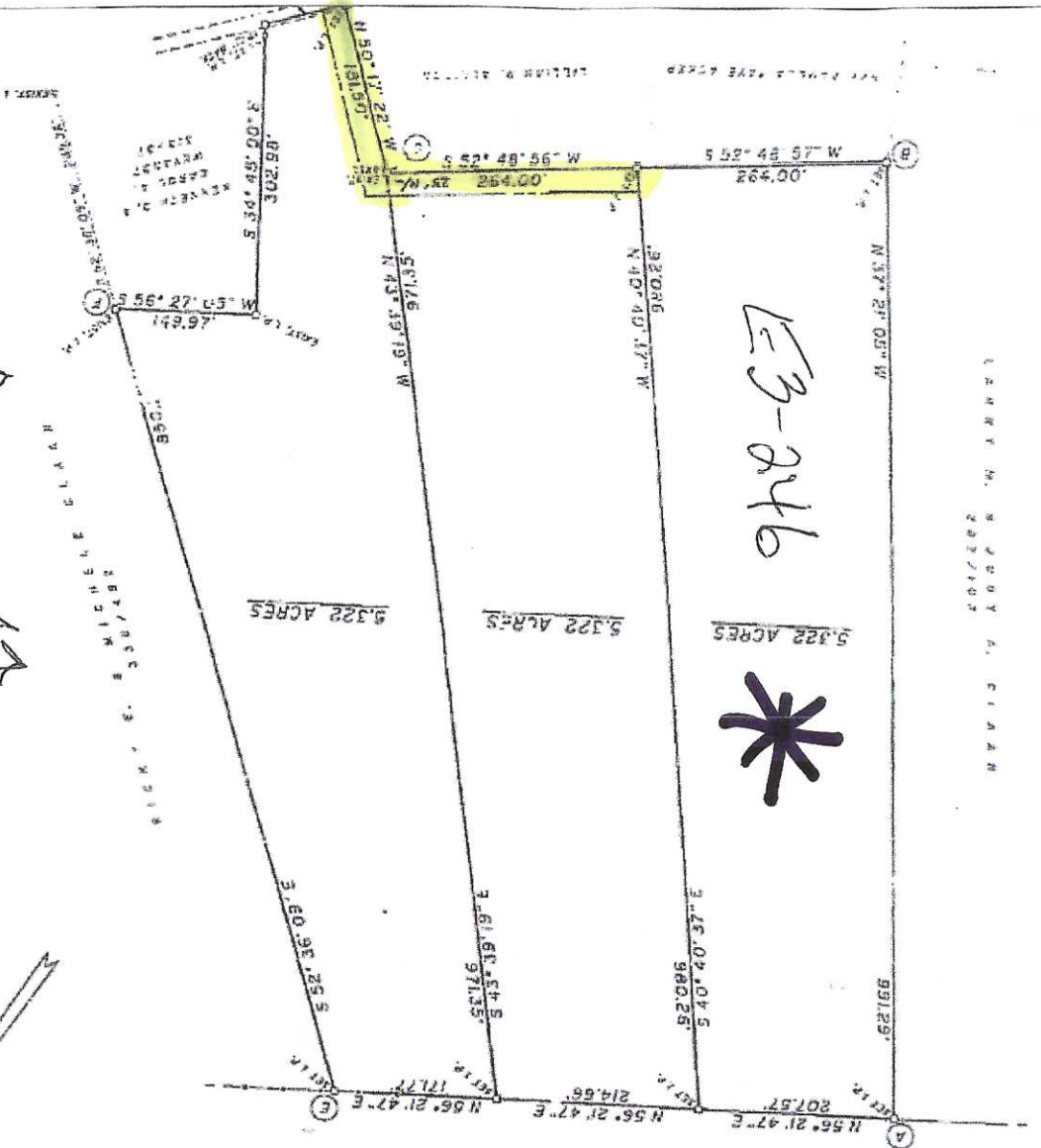


↑ Bedford Co. GIS map. ↑

To Access stay where Red Dotted lines are! - Do not drive up driveway

Red lines not survey, Accurate but Road Runs 75' w/ bottom of 381 Picnic Road Parcel per survey - Budget to verify



Directions: At corner of 687 Beaver Dam Rd Claysburg, turn onto Picnic Rd Go past 7 homes on left - see a directional sign on left (Land lays BEHIND 7th home - that is not the entrance); go past 2 more homes + make Left on right-of-way road that leads to Beauty Shop. Make Left at Y - go left approx 264' to 1st sign near corner survey pin. Survey pins at corners with/bbons on trees near pins.